



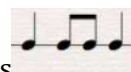
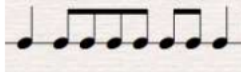
el paso symphony youth orchestras
a division of the el paso symphony



Youth Orchestra (EPYO) Audition 2019

Flute

1. Prepare the following Scales and Arpeggios:

- Major: G, C, F, Bb Eb, Ab, Db, Gb, B, E, A, D – two octaves
- You will be asked to perform one or more of the prepared scales and arpeggios, from memory, at a minimum tempo of MM quarter note = 80.
- Perform a minimum of 2 octaves where possible. Students who wish to play a 3rd octave may do so. Scales must be performed in complete octaves.



- The scale pattern is . The arpeggio pattern is .
- The scales and arpeggios will be tongued ascending and slurred descending.

2. Solo of candidate's choice (about 1 minute)

3. Excerpt (located on page two): **BEETHOVEN - Symphony No. 6: Mvt. II, mm.37-47, 57-67**



el paso symphony youth orchestras
a division of the el paso symphony

30 *dolce* *p* 3 Ob. I. *cresc. f* B

39 *dim. p* *dim.* *pp* *cresc. - - - f*

44 *sf* *p* *sf*

50 *p* *dim. - - - pp* C

57 *cresc. - - - p*

62

66 *cresc. f* *p* 5 Klar. I *cresc. p* *cresc.* D

Detailed description: This is a page of musical notation for a youth orchestra. It features seven staves of music in a 2/4 time signature with a key signature of one flat. The score includes various dynamics such as dolce, p, sf, dim., pp, cresc., and f. There are also performance markings like accents and hairpins. Section markers B, C, and D are placed above the staves. Instrument entries for Ob. I. and Klar. I are indicated. A blue bracket highlights a section of the music on the first staff, and another blue bracket highlights a section on the sixth staff.