

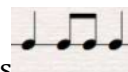
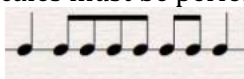


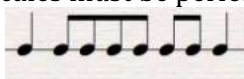
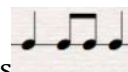
el paso symphony youth orchestras
a division of the el paso symphony

Youth Symphony (EPYS) Audition 2020 Oboe

1. Prepare the following Scales and Arpeggios:

- Major: G, C, F, Bb Eb, Ab, Db, Gb, B, E, A, D – two octaves
- You will be asked to perform one or more of the prepared scales and arpeggios, from memory, at a minimum tempo of MM quarter note = 80.
- Perform a minimum of 2 octaves where possible. Students who wish to play a 3rd octave may do so. Scales must be performed in complete octaves.



- The scale pattern is . The arpeggio pattern is .
- The scales and arpeggios will be tongued ascending and slurred descending.

2. Solo of candidate's choice (about 1 minute)

3. Excerpt (measures 13-23):

Intermezzo from “Carmen”

OBOE

Georges Bizet (1838–1875)
Arranged by Richard Meyer (ASCAP)

Andantino

6 7 12 6 13

1-6 7-12 p

15 16 17 18

19 20 21 22

23 24-26 27 28

p cresc. mp