

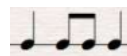
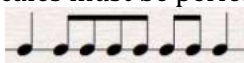


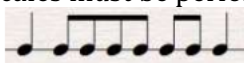
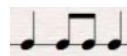
el paso symphony youth orchestras
a division of the el paso symphony

Youth Symphony (EPYS) Audition 2020 Tuba

1. Prepare the following Scales and Arpeggios:

- Major: G, C, F, Bb Eb, Ab, Db, Gb, B, E, A, D – two octaves
- You will be asked to perform one or more of the prepared scales and arpeggios, from memory, at a minimum tempo of MM quarter note = 80.
- Perform a minimum of 2 octaves where possible. Students who wish to play a 3rd octave may do so. Scales must be performed in complete octaves.



- The scale pattern is . The arpeggio pattern is .
- The scales and arpeggios will be tongued ascending and slurred descending.

2. Solo of candidate's choice (about 1 minute)

3. Excerpt (only bracketed portion – measures 29-42):

Romeo and Juliet Overture

TUBA

By Piotr Ilyich Tchaikovsky (1840-1893)
Arranged by Richard Meyer (ASCAP)

29  Allegro giusto



33-34

35

36

37

38

39

40

41

42

43

1.

2.

ff