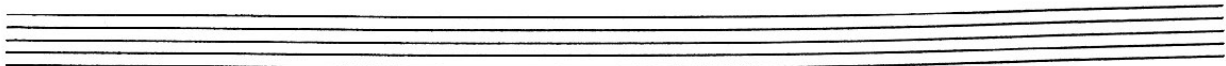


Name: _____

Freshman Theory
FUNDAMENTALS ASSIGNMENT 2

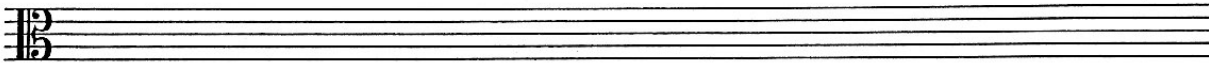
Fundamentals of Pitch and Scales

- I. Circle the errors in the following melody, then re-write the melody correctly on the given staff.

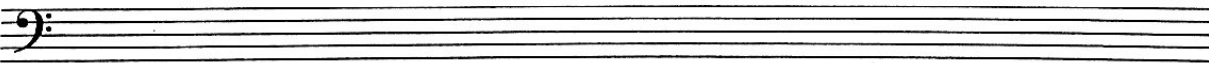


- II. Re-write the first THREE measures of the melody on p. 22 letter D [6th ed: p. 24] in your text (Wagner excerpt) using the clefs given below. Be sure to accurately notate accidentals, stem directions, and dots.

(write the melody *down* 1 octave)



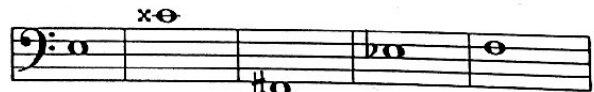
(write the melody *down* 2 octaves)



- III. Notate the following notes UP or DOWN by one half step as indicated.



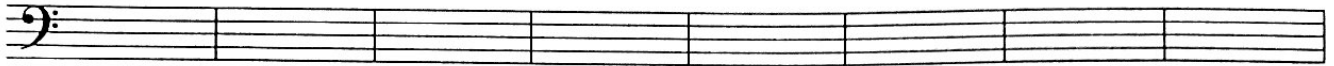
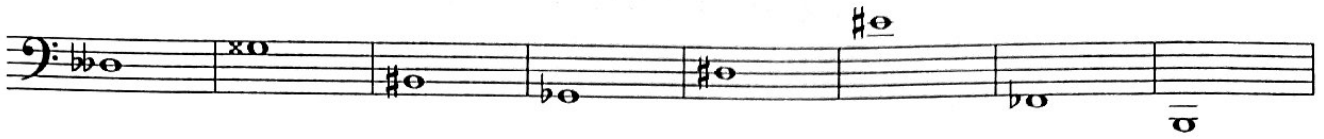
↓ UP one half step



↓ DOWN one half step

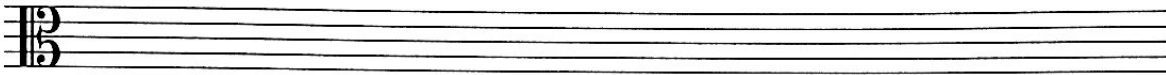


IV. Re-notate the following pitches *enharmonically*.

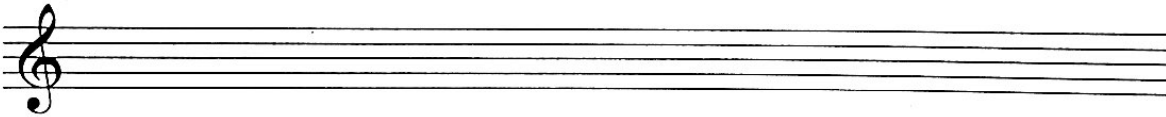


V. Notate the following scales, indicating the whole steps and half steps as shown in your text. Use accidentals (not key signatures)

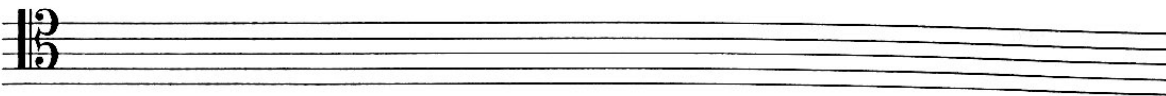
F major



A \flat major



D major



B \flat major

