

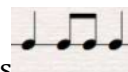
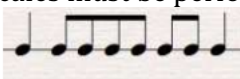


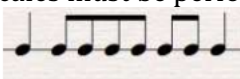
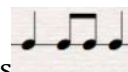
el paso symphony youth orchestras
a division of the el paso symphony

Youth Orchestra (EPYO) Audition 2020 Flute

1. Prepare the following Scales and Arpeggios:

- Major: G, C, F, Bb Eb, Ab, Db, Gb, B, E, A, D – two octaves
- You will be asked to perform one or more of the prepared scales and arpeggios, from memory, at a minimum tempo of MM quarter note = 80.
- Perform a minimum of 2 octaves where possible. Students who wish to play a 3rd octave may do so. Scales must be performed in complete octaves.



- The scale pattern is . The arpeggio pattern is .
- The scales and arpeggios will be tongued ascending and slurred descending.

2. Solo of candidate's choice (about 1 minute)

3. 2 Excerpts below:

#1

Title: Overture to The Magic Flute - Mozart

$\text{♩} = 80-92$



el paso symphony youth orchestras
a division of the el paso symphony

#2

The Walk to the Paradise Garden

Intermezzo

from the Opera
A Village Romeo and Juliet

FREDERICK DELIUS

Arranged by
Sir THOMAS BEECHAM

Flutes

Flts. a. 2

poco

f

accel. - - poco - - a.

trm

mf

mp

F1.1

You will find an instructional video in order to prepare these excerpts and your audition by following this link:

<https://youtu.be/G1p-D4taR3U>